

WAKE FOREST-RALEIGH EXPRESS

WRX

MONDAY-FRIDAY SERVICE

Express service provided by GoTriangle and operated by GoRaleigh vehicles

WITH STOPS IN

Downtown Wake Forest

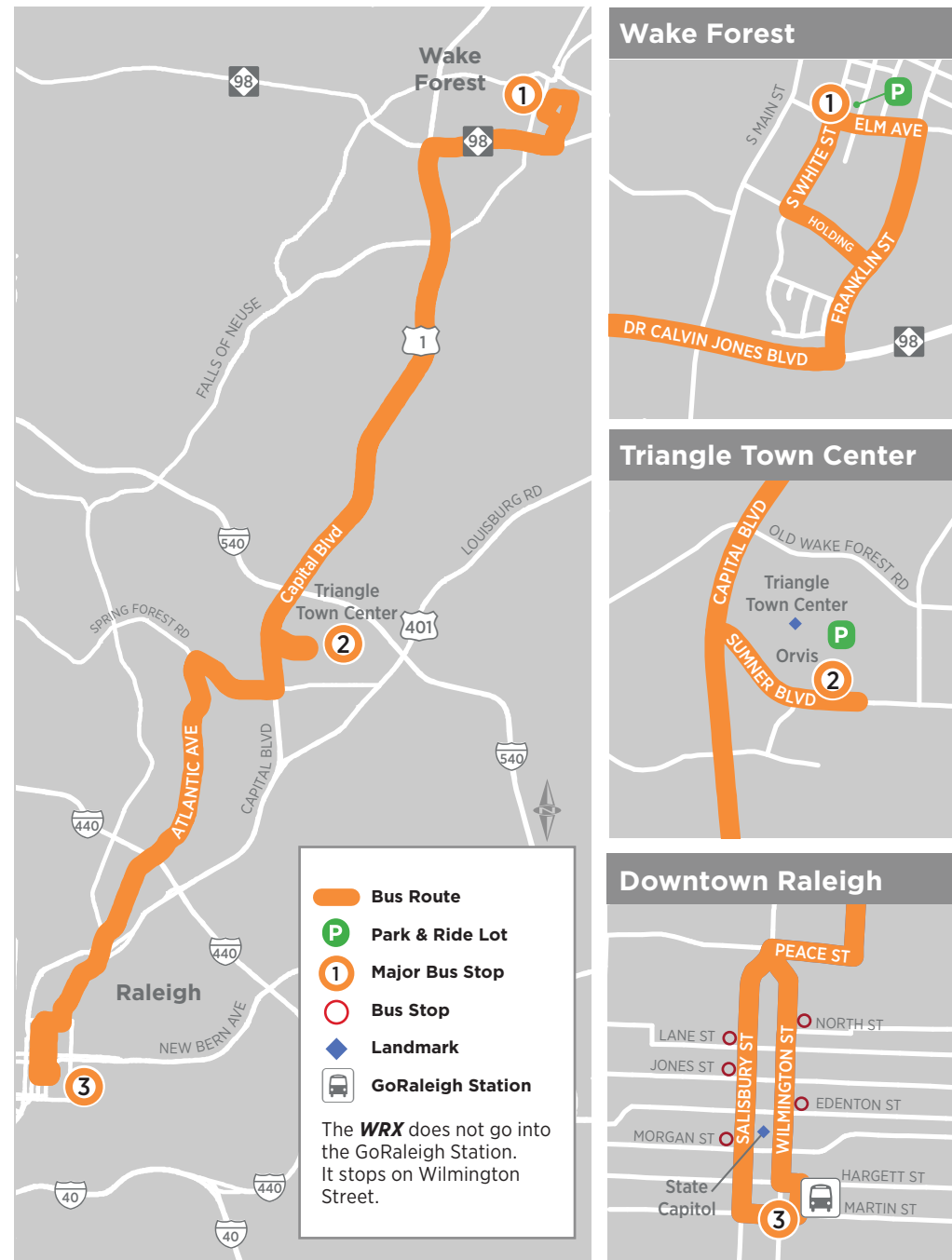
Triangle Town Center

Downtown Raleigh State Government Complex



Effective January 6, 2020

Wake Forest-Raleigh Express WRX



GoRaleigh vehicles are Safe Places for anyone in need of immediate help and safety.



Smoking is not allowed on GoRaleigh vehicles.

Smoking and/or the use of vapor products, including e-cigarettes, is not permitted on GoRaleigh vehicles, at bus stops and city-owned sidewalks within Orange, Durham and Wake County.

The Wake Forest-Raleigh Express is provided by GoTriangle and operated by GoRaleigh vehicles.

Wake Forest-Raleigh Express Holiday Service

No service on Saturday, Sunday and these holidays:

- New Year's Day
- MLK Jr. Day
- Good Friday
- Memorial Day
- Independence Day
- Labor Day
- Thanksgiving Day
- Friday after Thanksgiving
- Christmas Eve
- Christmas Day

For all bus route holiday schedules, visit GoRaleigh.org or call 919-485-7433.

Where to buy passes

IN PERSON: Wake Forest Town Hall, 301 S. Brooks St., Wake Forest; Mon-Fri, 8 am-5 pm
GoRaleigh Station Information Center, 214 S. Blount St., Mon-Fri, 7 am-6 pm; Sat, 8 am-5 pm

ON BUS: Single ride or express day pass. Exact change.

ONLINE: GoTriangle.org

How to connect to other destinations

The GoRaleigh Station at 214 S. Blount St. offers connecting routes to RDU International Airport, Cary, RTP, Chapel Hill, Durham and other destinations in the area. Visit GoRaleigh.org to see the system-wide route map and individual route schedules.

Wake Forest-Raleigh Express Fares

One Way	
adult	\$3
youth, ages 12 and younger	free
youth, ages 13-18 (with Youth Go Pass)	free
youth, ages 13-18 (without Youth Go Pass)	\$1.25
seniors, ages 65+, and disabled*	\$1.25
Day Pass	
adult	\$6
youth, ages 6-18	\$2.50
youth, ages 5 and younger	free
seniors, ages 65+, and disabled*	\$2.50
7-Day Express Pass	
adult	\$22
youth, ages 6-18	\$9.25
youth, ages 5 and younger	free
seniors, ages 65+, and disabled*	\$9.25
31-Day Express Pass	
adult	\$102
youth, ages 6-18	\$42.50
youth, ages 5 and younger	free
seniors, ages 65+, and disabled*	\$42.50
Stored Value Cards**	
\$13.50 stored value card	\$12
\$25 stored value card	\$20
\$50 stored value card	\$40

* **DISABLED RATE QUALIFICATIONS:** Medicare card holders, disabled riders with a VA Disability Card, VA "Service Connected" card or disability card from any transit system.

** Stored Value Cards are valid on Regional and Express Triangle Transit Routes and on C-Tran and GoRaleigh.

DISCOUNTS: UNC, NCSU, NC state government and other Triangle employers may offer free or discounted passes to students and staff. Check with your transportation coordinator or HR department.

Wake Forest to Raleigh

Downtown Wake Forest South White Street at Elm Avenue	Triangle Town Center at the Orvis store	Downtown Raleigh Wilmington St at Martin St
1	2	3
5:55 am	6:20 am	6:55 am
6:55 am	7:20 am	7:55 am
7:55 am	8:20 am	8:55 am
5:25 pm	5:45 pm	6:15 pm
6:25 pm	6:45 pm	7:15 pm

Raleigh to Wake Forest

Downtown Raleigh Wilmington St at Martin St	Triangle Town Center at the Orvis store	Downtown Wake Forest South White Street and Elm Avenue
3	2	1
6:00 am	6:25 am	6:50 am
7:00 am	7:25 am	7:50 am
4:20 pm	4:50 pm	5:20 pm
5:20 pm	5:50 pm	6:20 pm
6:20 pm	6:50 pm	7:20 pm